

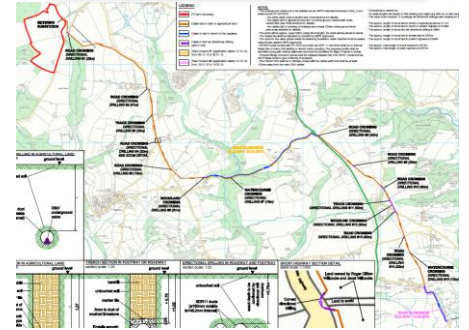
33 kV Connection to Newton Ferrer PV over 9km route

Customer: Ralos New Energy UK Ltd. **ralos**
DNO: Western Power Distribution **WESTERN POWER DISTRIBUTION**
Location: St. Mellion, Cornwall, UK Serving the South West and Wales

GEW2 picked up this project in January of 2015 with almost an impossible task of completing the route by March 31st 2015.

The HV cable route ran through 35 fields, 12 landowners and consisted of 2 road closures spanning over 9 km. GEW2 has put 4 directional drilling machines and 6 separate civil crews onto this task in order to complete all the excavations on time for the end of March. GEW2 has supported the customer on site with last minute transformer change over and completed an extensive hand over package.

GEW2 has negotiated and obtained a Crossing Deed from Wales & West Utilities for crossing the high pressure gas main.



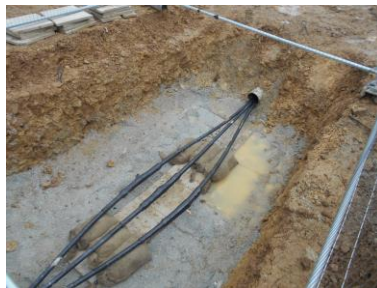
Scope:

- Excavation in rock along 9km route
- Supply and installation of ducting and marker tape
- Section 50 application and permit
- Coordination with the local council to close 2 road sections
- Liaison with 12 separate land owners and their solicitors to gain access to 35 different fields
- Works notification letters and PR
- Completion of 13 directional drilling sections
- Supply and installation of 9km of WPD HV cable
- HV cable termination into the WPD substation
- HV jointing
- Final substation testing and commissioning hand over package for WPD

Cable installation in rock



WPD Joint Bay



GEW2 Ltd.
Unit 4 – The Office Village Keypoint
Nix's Hill Industrial Estate Alfreton, Derbyshire, DE557FQ
Website: <http://www.gew2.co.uk/>

Contact: [in](#) [facebook](#) [em@il](#)

