

Supply of a 500kW Wind Turbine Export and a 1kW Import supply to Foxbrough Farm

Customer: Mosscliff Environmental



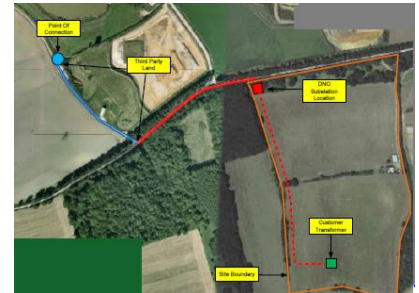
DNO: UKPN



Location: Foxbrough Farm, Waldringfield, Suffolk, IP12 4PT.

The Foxborough Farm project was to supply a UKPN Substation and Customer transformer to allow for the 500kW export, and 1kW import for a Wind Turbine. GEW2 successfully secured the private network cabling and transformer. Customer, BT and UKPN had to overcome an extensive amount of challenges related to the land and cable rights, where GEW2 supported all the involved parties throughout the project. The large section of the route was installed within the BT land and variation to the UKPN connection design had to take in account a nearby PV farm.

GEW²



1850m Cable Route Installed

UKPN 11kV Substation



Ducted Cable Trench



Scope:

- Supply and installation of an 11kV UKPN substation consisting of an RMU, metering unit and emergency trip button.
- Supply and installation of the customer 800kVA transformer
- Cable supply , installation and jointing
- Securing of Wayleaves with Midway surveying
- Supply and installation of the customer HV Switch
- 3 Terminations into the 11kV Substation
- 2 Termination into the HV Switch and transformer
- Supply and installation of above ground Earthing for the 11kV substation
- Final testing and commissioning of the substation
- All cable testing